

Offshore Renewable Protocol for Archaeological Discoveries



Operational Guide 5: Inter-tidal Cable Laying

Introduction

This Operational Guide is intended to help those involved in inter-tidal work to meet the requirements of The Crown Estate's Offshore Renewables Protocol for Archaeological Discoveries (ORPAD).

Inter-tidal cable laying activities have the potential to uncover and reveal archaeological material. All operatives and the Site Champion should be aware that there are times when this can occur. Activities that may give rise to archaeological discoveries include:

- Trenching of cables into inter-tidal areas throughout the inter-tidal zone
- Pre-trenching survey work

What to do

In some cases, provision will already have been made for archaeologists to be present as part of EIA processes or as a result of a Written Scheme of Investigation (WSI) agreed by the developer. In such cases, archaeological reporting will be undertaken by the retained archaeologist. In other cases there may be no archaeologist present and the ORPAD will apply. This Operational Guide will help you to report finds that you suspect may be of archaeological interest.

DOs

- ✓ Check if provision has already been made for archaeological input
- ✓ Seek the advice of the Protocol team at Wessex Archaeology if you are unsure on your next steps – protocol@wessexarch.co.uk
- ✓ Report anything you suspect is of archaeological or cultural heritage interest to the Site Champion
- ✓ If there is not an appointed archaeologist present, the Site Champion should report the discovery to the Nominated Contact immediately
- ✓ Record the GPS location of the find or obstruction or record it on plans
- ✓ Make sure all details are recorded (exact location, date, time, etc.) using the Protocol's recording forms
- ✓ If you suspect a discovery is of 'high potential' (see criteria) stop work in the area where the find was discovered until archaeological advice is received via the Nominated Contact
- ✓ Keep finds protected in a suitable container in a cool, dark place
- ✓ If the item came from seawater, keep it immersed in seawater
- ✓ If the item is dry, keep it dry and protected
- ✓ Label finds and handle them with care

DON'Ts

- ✗ DON'T wait to report the finds
- ✗ DON'T report a discovery if provision has already been made for archaeological input (e.g. by a retained archaeologist)
- ✗ DON'T remove any concretion, sediment or dirt
- ✗ DON'T leave the finds where they could be damaged or deteriorate
- ✗ DON'T allow wet finds to dry out

Criteria for High Potential Finds – Nominated Contact to be informed immediately

- Single finds that are post-medieval or earlier in date (date to 1800 or earlier)
- Single finds that relate to military aircraft
- Multiple finds recovered from one location
- Indications of the presence of a shipwreck or other structural remains
- Peat or other fine-grained sediments that contain worked flint, charcoal or bone

Criteria for Low Potential Finds

- Single, isolated finds that are not dateable or of modern (post-1800) date
- Peat deposits

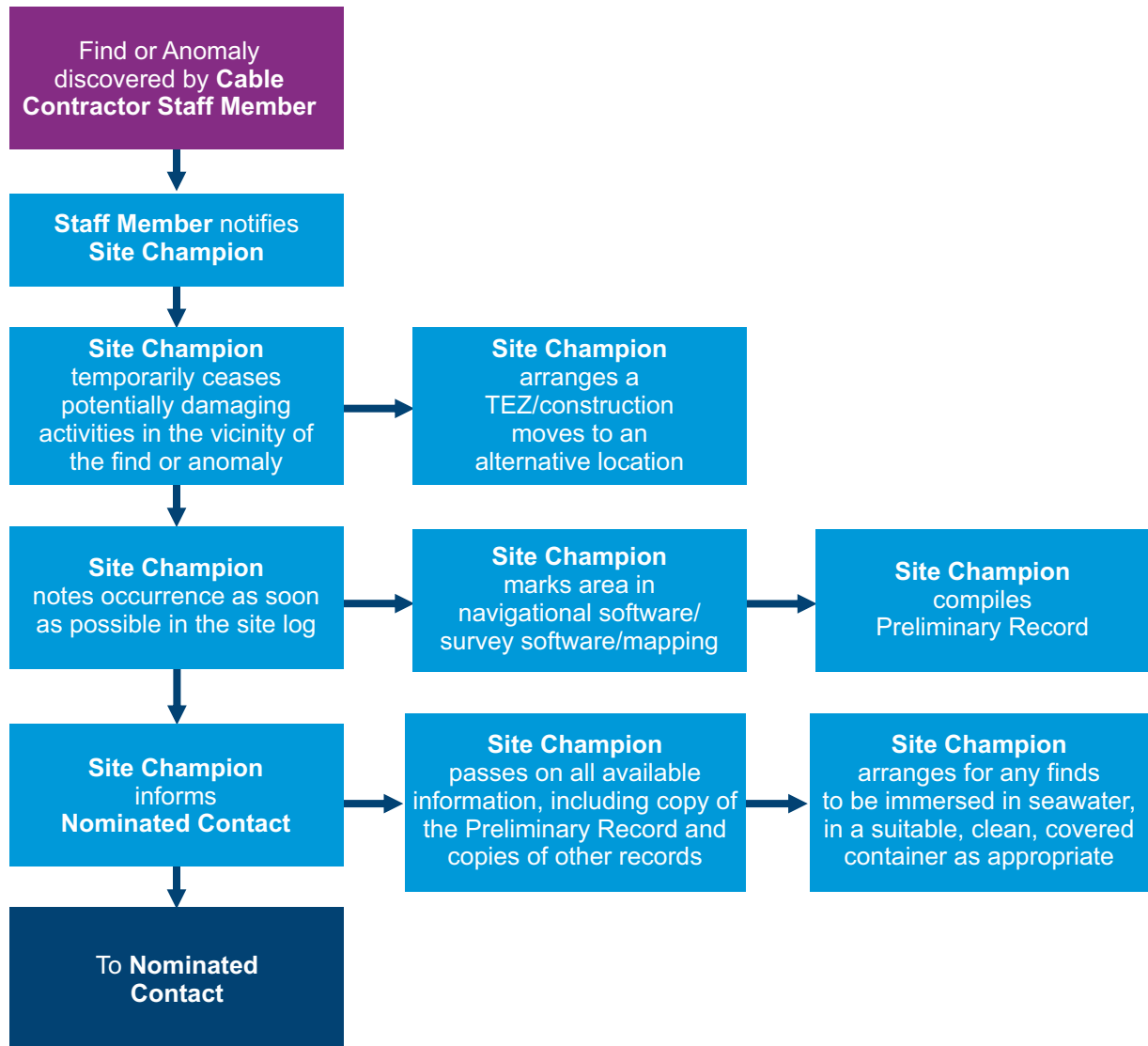
Prepared by



Offshore Renewable Protocol for Archaeological Discoveries

Operational Guide 5: Inter-tidal Cable Laying

Actions by Site Champion Flow Chart



Guidelines for identifying finds of archaeological interest can be found in the *Protocol for Archaeological Discoveries: Offshore Renewables Projects* (The Crown Estate, 2014). The Preliminary Record form for reporting archaeological discoveries to the Nominated Contact can be found in the Protocol document and on the Protocol website:

www.wessexarch.co.uk/projects/marine/tcerenewables