

Offshore Renewable Protocol for Archaeological Discoveries



Operational Guide 6: Onshore Work

Introduction

This Operational Guide is intended to help those involved in onshore work to meet the requirements of The Crown Estate's Offshore Renewables Protocol for Archaeological Discoveries (ORPAD).

Onshore works activities that involve ground disturbance have the potential of unearthing archaeological material. Operatives and the Site Champion should be aware that there are times when this can occur.

Those activities that may give rise to archaeological discoveries include:

- Trenching of cables through onshore areas

- Pre-trenching survey work
- Installation activities (e.g. substations)

What to do

In many cases, provision will already have been made for an archaeologist to be present as part of EIA processes or as a result of a Written Scheme of Investigation (WSI) agreed by the developer. In such cases, the retained archaeologist will interpret and report any discoveries. Where there is no immediate provision for archaeological input, the ORPAD will apply. This Operational Guide will help you to report discoveries that you suspect may be of archaeological interest.

DOs

- ✓ Check if provision has already been made for archaeological input
- ✓ Seek the advice of the Protocol team at Wessex Archaeology if you are unsure on your next steps – protocol@wessexarch.co.uk
- ✓ If there is not an appointed archaeologist present, the Site Champion reports the discovery to the Nominated Contact
- ✓ Report anything you suspect is of archaeological or cultural heritage interest to the Site Champion
- ✓ Record the position of any discovery using GPS and mark the location on plans
- ✓ Make sure all details are recorded (exact location, date, time, etc.) using the Protocol's recording forms
- ✓ If you suspect a discovery is of 'high potential' (see criteria) stop work in the area where the find was discovered until archaeological advice is received via the Nominated Contact
- ✓ If a find is discovered after the work is completed, for example during processing, it should still be reported.
- ✓ Keep finds protected in a suitable container in a cool, dark place
- ✓ Label finds and handle them with care

DON'Ts

- ✗ DON'T wait to report the finds
- ✗ DON'T report finds through the Protocol if provision has already been made for archaeological input (e.g. by a retained archaeologist)
- ✗ DON'T remove any concretion, sediment or dirt
- ✗ DON'T leave the finds where they could be damaged or deteriorate

Criteria for High Potential Finds – Nominated Contact to be informed immediately

- Single finds that are post-medieval or earlier in date (date to 1800 or earlier)
- Single finds that relate to military aircraft
- Multiple finds recovered from one location
- Indications of the presence of a shipwreck or other structural remains
- Peat or other fine-grained sediments that contain worked flint, charcoal or bone

Criteria for Low Potential Finds

- Single, isolated finds that are not dateable or of modern (post-1800) date
- Peat deposits

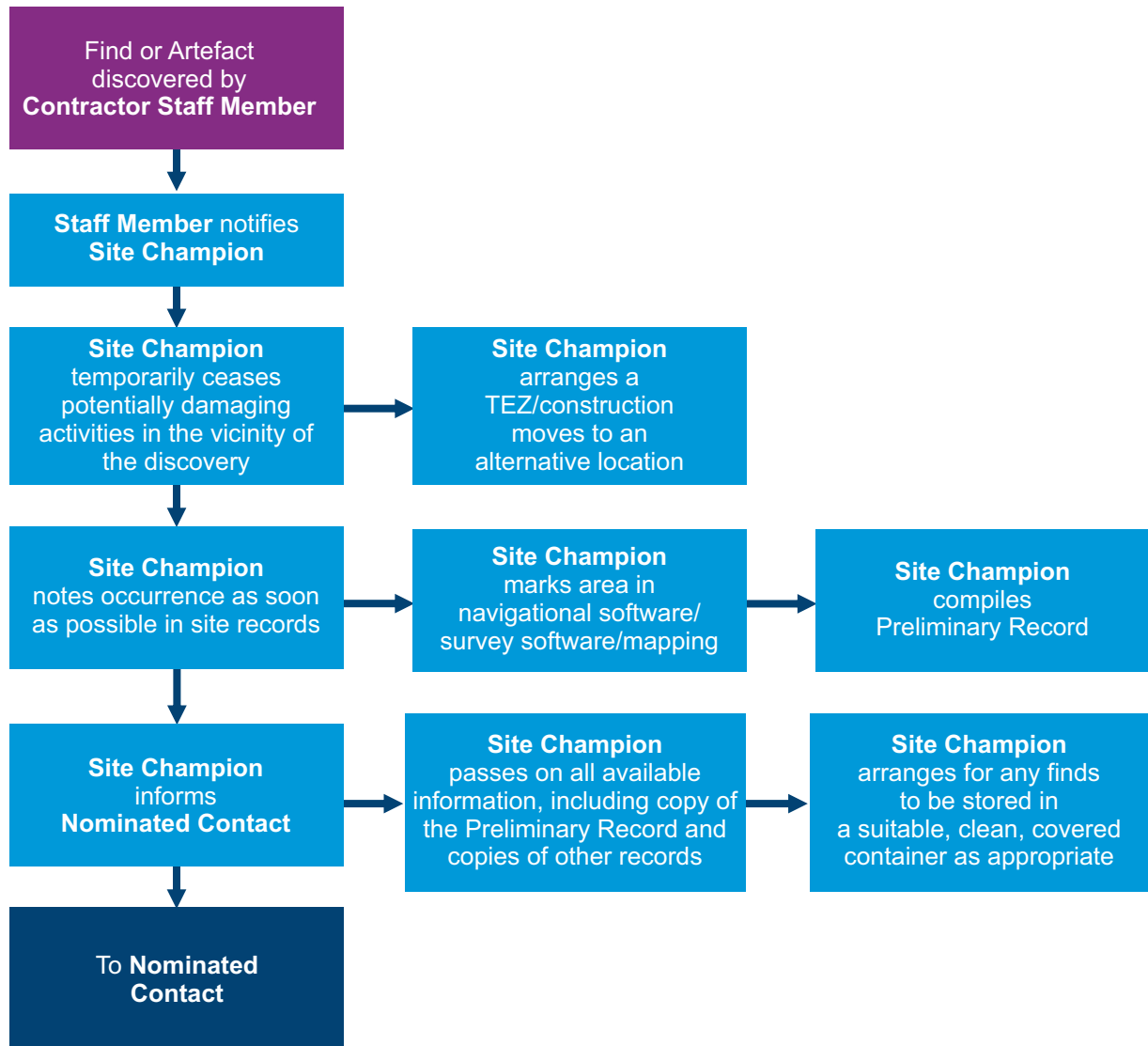
Prepared by



Offshore Renewable Protocol for Archaeological Discoveries

Operational Guide 6: Onshore Work

Actions by Site Champion Flow Chart



Guidelines for identifying finds of archaeological interest can be found in the *Protocol for Archaeological Discoveries: Offshore Renewables Projects* (The Crown Estate, 2014). The Preliminary Record form for reporting archaeological discoveries to the Nominated Contact can be found in the Protocol document and on the Protocol website:

www.wessexarch.co.uk/projects/marine/tcerenewables