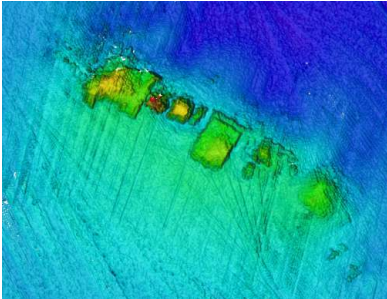


Offshore Renewable Protocol for Archaeological Discoveries



Operational Guide 1: Geophysical Survey



Introduction

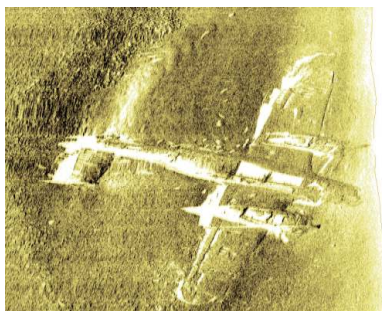
This Operational Guide is intended to help those involved in offshore geophysical survey to meet the requirements of The Crown Estate's Offshore Renewables Protocol for Archaeological Discoveries (ORPAD).

Geophysical surveys carried out for engineering, ecological or other purposes can reveal anomalies that may be important archaeologically, such as shipwrecks, aircraft or buried prehistoric landscape features.

What to do

In many cases, provision will already have been made for an archaeologist to review geophysical survey data as part of Environmental Impact Assessment (EIA) processes or as a result of a Written Scheme of Investigation (WSI) agreed by the developer. In such cases, the retained archaeologist will interpret and report on the survey results. Where there is no immediate provision for archaeological input, the ORPAD will apply.

This Operational Guide will help you to report geophysical anomalies that you suspect may be of archaeological interest.



DOs

- ✓ Check if provision has already been made for archaeological input
- ✓ Seek the advice of the Protocol team at Wessex Archaeology if you are unsure on your next steps – protocol@wessexarch.co.uk
- ✓ Report anything you suspect to be of archaeological or cultural heritage interest to the Site Champion
- ✓ If you are the Site Champion, report the anomaly to your Nominated Contact immediately
- ✓ Record the position of the anomaly by GPS and on the survey vessel track plot
- ✓ Make sure all details are recorded (exact location, date, time, etc.) using the Protocol's recording forms
- ✓ If you suspect an anomaly is of 'high potential' (see criteria) stop any work that may affect it until archaeological advice is received via the Nominated Contact
- ✓ Remember to report any anomalies discovered following the survey, for example during data processing, in the same way

DON'Ts

- ✗ DON'T wait to report the anomaly
- ✗ DON'T report anomalies if provision has already been made for archaeological input (e.g. by a retained archaeologist)

Criteria for High Potential Finds – Nominated Contact to be informed immediately

- Single finds that are post-medieval or earlier in date (date to 1800 or earlier)
- Single finds that relate to military aircraft
- Multiple finds recovered from one location
- Indications of the presence of a shipwreck or other structural remains
- Peat or other fine-grained sediments that contain worked flint, charcoal or bone

Criteria for Low Potential Finds

- Single, isolated finds that are not dateable or of modern (post-1800) date
- Peat deposits

Prepared by

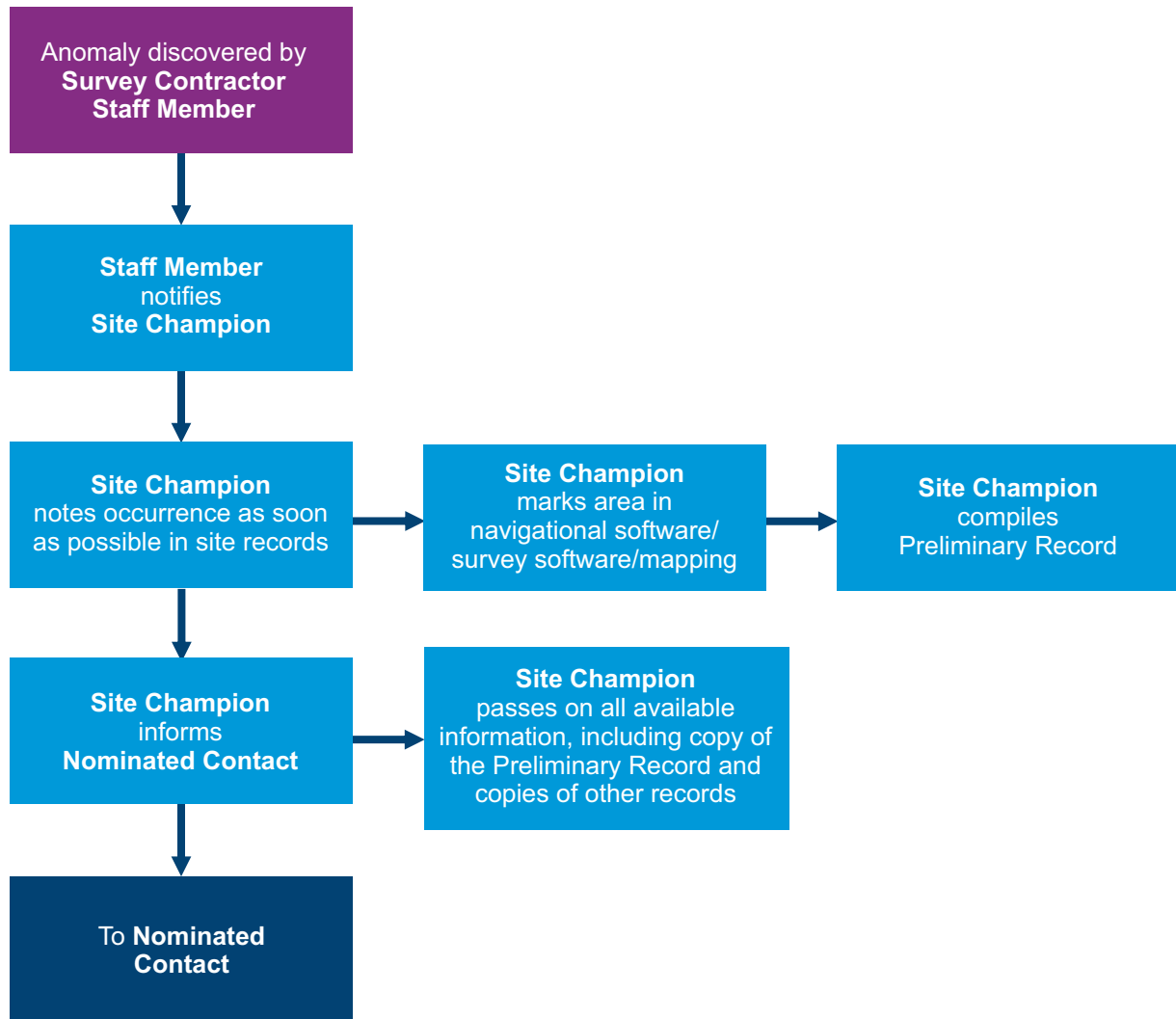


Offshore Renewable Protocol for Archaeological Discoveries



Operational Guide 1: Geophysical Survey

Actions by Site Champion Flow Chart



Guidelines for identifying finds of archaeological interest can be found in the *Protocol for Archaeological Discoveries: Offshore Renewables Projects* (The Crown Estate, 2014). The Preliminary Record form for reporting archaeological discoveries to the Nominated Contact can be found in the Protocol document and on the Protocol website:

www.wessexarch.co.uk/projects/marine/tcerenewables

Prepared by

