



165-167 ROMFORD ROAD, STRATFORD E15, LONDON BOROUGH OF NEWHAM

Archaeological Evaluation Report



**165 – 167 ROMFORD ROAD, STRATFORD, E15
LONDON BOROUGH OF NEWHAM**

ARCHAEOLOGICAL EVALUATION REPORT

Prepared for
Metroman Ltd,
41 Windsor Road
Forest Gate
London E7 0QX

by

Wessex Archaeology in London
Unit 113
The Chandlery,
50 Westminster Bridge Road
London
SE1 7QY

**Museum of London Site Code
RFF06**

63920.02

August 2006

**165 – 167 ROMFORD ROAD, STRATFORD, E15
LONDON BOROUGH OF NEWHAM**

ARCHAEOLOGICAL EVALUATION REPORT

Table of Contents

Table of Contents.....	i
Summary.....	ii
Acknowledgements.....	iii
1 INTRODUCTION	1
1.1 SCOPE OF DOCUMENT	1
1.2 PLANNING BACKGROUND	1
2 SITE GEOLOGY AND TOPOGRAPHY	1
2.1 GEOLOGY	1
2.2 TOPOGRAPHY & USE.....	1
3 ARCHAEOLOGICAL AND HISTORICAL BACKGROUND.....	2
3.1 AREA OF ARCHAEOLOGICAL PRIORITY	2
4 EVALUATION STRATEGY AND METHODOLOGY.....	2
4.1 METHODOLOGICAL STANDARDS	2
4.2 HEALTH AND SAFETY	2
4.3 FIELDWORK.....	2
5 RESULTS.....	2
6 CONCLUSION	3
7 ARCHIVE	3
8 BIBLIOGRAPHY.....	3
APPENDIX 1 TRENCH SUMMARY	4
APPENDIX 2: OASIS FORM.....	ERROR! BOOKMARK NOT DEFINED.

Figures

Figure 1. Site Location and Trench Location Map

165 – 167 ROMFORD ROAD, STRATFORD, E15
LONDON BOROUGH OF NEWHAM

ARCHAEOLOGICAL EVALUATION REPORT

Summary

Wessex Archaeology was commissioned to undertake an archaeological evaluation of land at 165-167 Romford Road in the London Borough of Newham. A single trench was excavated. No archaeological remains were present as a result of extensive modern disturbance.

165 – 167 ROMFORD ROAD, STRATFORD, E15
LONDON BOROUGH OF NEWHAM

ARCHAEOLOGICAL EVALUATION REPORT

Acknowledgements

Wessex Archaeology would like to thank Raj and Bira Sanger of Metroman Ltd for commissioning the work, and also to thank David Divers of Greater London Archaeological Advisory Service (GLAAS) for monitoring the works. The project was managed for Wessex Archaeology by Peter Reeves. Cornelius Barton conducted the fieldwork and compiled this report, with illustrations by Mark Roughley.

**165 – 167 ROMFORD ROAD, STRATFORD,
LONDON BOROUGH OF NEWHAM**

ARCHAEOLOGICAL EVALUATION REPORT

1 INTRODUCTION

1.1 Scope of Document

- 1.1.1 Wessex Archaeology was commissioned by Metroman Ltd (the Client) to undertake an archaeological evaluation at 165-167 Romford Road, Stratford in the London Borough of Newham (the Site), centred on NGR 539700, 184730 (**Figure 1**). This document sets out the results of the evaluation.

1.2 Planning Background

- 1.2.1 A planning application has been approved for the development of the Site, with the erection of residential flats. As part of the conditions, further information was requested by the Local Planning Authority on the survival of any archaeological deposits within the Site.
- 1.2.2 It was determined in consultation with David Divers, English Heritage Archaeological Advisor to the London Borough of Newham, that an archaeological evaluation of the Site was appropriate.

2 SITE GEOLOGY AND TOPOGRAPHY

2.1 Geology

- 2.1.1 The underlying geology of the area comprises Flood Plain Gravel terraces of the Thames and Roding (British Geological Society Drift Edition, Sheet 257).

2.2 Topography & Use

- 2.2.1 The modern ground level within the site is approximately 10m above Ordnance Datum (aOD).
- 2.2.2 The Site is a disused petrol filling station with much of the western area having been occupied with holding tanks for fuel. It is directly north of Romford Road some 400m east of the core of the historic village of Stratford.
- 2.2.3 The fuel tanks have been removed from the site. Records of this, provided by the client, clearly show only the eastern half of the site had any form of archaeological potential.

3 ARCHAEOLOGICAL AND HISTORICAL BACKGROUND

3.1 Area of Archaeological Priority

- 3.1.1 The Site is defined within the London Borough of Newham Unitary Development Plan (adopted June 2001) as being within an Area of Archaeological Priority. The area is presumed to contain evidence of medieval activity given that Romford Road overlies the route of the old road linking the historic village centre of East Ham to Barking Abbey.
- 3.1.1 No known archaeological deposits or finds have been recorded from the Site prior to the evaluation.

4 EVALUATION STRATEGY AND METHODOLOGY

4.1 Methodological Standards

- 4.1.1 All work was undertaken in compliance with the standards outlined in the Institute of Field Archaeologist's *Standard and Guidance for Archaeological Evaluations* (2001).

4.2 Health and Safety

- 4.2.1 All work was undertaken in accordance with the Health and Safety at Work Act 1974 and the Management of Health and Safety Regulations 1992, and all other relevant Health and Safety legislation, regulations and codes of practice in force. A risk assessment was prepared and all site staff were required to read and sign it before works commenced.

4.3 Fieldwork

- 4.3.1 Fieldwork methodology was agreed in advance with David Divers of GLAAS and a Written Scheme of Investigation was produced (Wessex Archaeology 2006). The evaluation was undertaken by means of a single trench measuring 10m by 2m (see **Figure 1**). This was excavated by a mechanical excavator under the supervision of an archaeologist.
- 4.3.2 A complete drawn and written record of excavated deposits was compiled. This included a plan drawn at 1:100 and a sample section at 1:10.
- 4.3.3 A full photographic record was maintained using both colour transparencies and black and white negatives (on 35mm film). A digital photographic record of the work was also maintained.

5 RESULTS

- 5.1.1 No archaeological deposits or artefacts were present. The trench was dug to a depth of 2.10m, at which point the natural terrace gravel was observed. The deposits above the natural gravel all consisted of made-ground levelling deposits below a concrete slab of mid-to-late 20th century origin.

6 CONCLUSION

- 6.1 It appears that successive phases of development on the Site associated with previous use have truncated the area to such an extent that no archaeological remains survive, if they existed originally.

7 ARCHIVE

- 7.1 The completed project archive will be prepared in accordance with the guidelines outlined in Appendix 3 of *Management of Archaeological Projects* (English Heritage 1991) and in accordance with the *Guidelines for the preparation of excavation archives for long term storage* (UKIC 1990). The archive from the project will be deposited with the Museum of London under MOL Site Code: RFF06.

8 BIBLIOGRAPHY

English Heritage 1991 *Management of Archaeological Projects*

London Borough of Newham Unitary Development Plan (adopted June 2001)
<http://www.newham.gov.uk/NR/rdonlyres/20C26A87-34EB-4C34-8254-D73A1ADE46D2/0/UDP3EnvironmentQuality.pdf>

Wessex Archaeology 2006 *163-165 Romford Road, Stratford, E15, London Borough of Newham: Specification for an Archaeological Evaluation*

APPENDIX 1: TRENCH SUMMARY

Trench 1			
Length: 10m		Width: 2m	Depth: 2.10m
Context Number	Description	Depth	
100	Concrete slab	0-0.05m	
101	Made ground deposit- mixed clay, sand and gravel with building rubble	0.05-0.40m	
102	Mixed clay and gravel layers	0.40-0.85m	
103	Yellow-brown terrace gravel natural	0.85m+	

APPENDIX 2: OASIS FORM

OASIS DATA COLLECTION FORM

[List of Projects](#) | [Search Projects](#) | [New project](#) | [Change your details](#) | [HER coverage](#) | [Log out](#)

Printable version

OASIS ID: wessexar1-17786

Project details

Project name	165-167 Romford Road, Stratford, E15, London Borough of Newham
Short description of the project	An evaluation was carried out by Wessex Archaeology as required by a planning condition to determine whether archaeological deposits survived at the site, which is to be redeveloped as residential flats. A single trench was excavated to a depth of 2.10m, at which point natural gravel was encountered. No archaeological features or artefacts were recorded, all deposits above the natural gravel being made ground levelling deposits capped by a modern concrete slab.
Project dates	Start: 28-07-2006 End: 28-07-2006
Previous/future work	No / Not known
Any associated project reference codes	63920 - Contracting Unit No.
Any associated project reference codes	RFF06 - Sitecode
Type of project	Field evaluation
Methods & techniques	'Sample Trenches'
Development type	Urban residential (e.g. flats, houses, etc.)
Prompt	Direction from Local Planning Authority - PPG16

Position in the planning process After full determination (eg. As a condition)

Project location

Country	England
Site location	GREATER LONDON NEWHAM STRATFORD 165-167 Romford Road, Stratford, E15, London Borough of Newham
Study area	4.20 Square metres
National grid reference	TQ 39700 84730 Point

Project creators

Name of Organisation	Wessex Archaeology
Project brief originator	Local Planning Authority (with/without advice from County/District Archaeologist)
Project design originator	Wessex Archaeology
Project director/manager	Peter Reeves
Project supervisor	C. Barton

Project archives

Physical Archive Exists?	No
Digital Archive recipient	Museum of London
Digital Archive ID	RFF06
Digital Contents	'other'
Digital Media available	'Images raster / digital photography','Text'

Paper Archive recipient	Museum of London
Paper Archive ID	RFF06
Paper Contents	'Stratigraphic'
Paper Media available	'Context sheet', 'Photograph', 'Report', 'Unspecified Archive'

Project bibliography 1

Publication type	Grey literature (unpublished document/manuscript)
Title	165-167 Romford Road, Stratford, E15, London Borough of Newham: evaluation
Author(s)/Editor(s)	Wessex Archaeology
Other bibliographic details	Report no. 63920.02
Date	2006
Issuer or publisher	Wessex Archaeology
Place of issue or publication	London

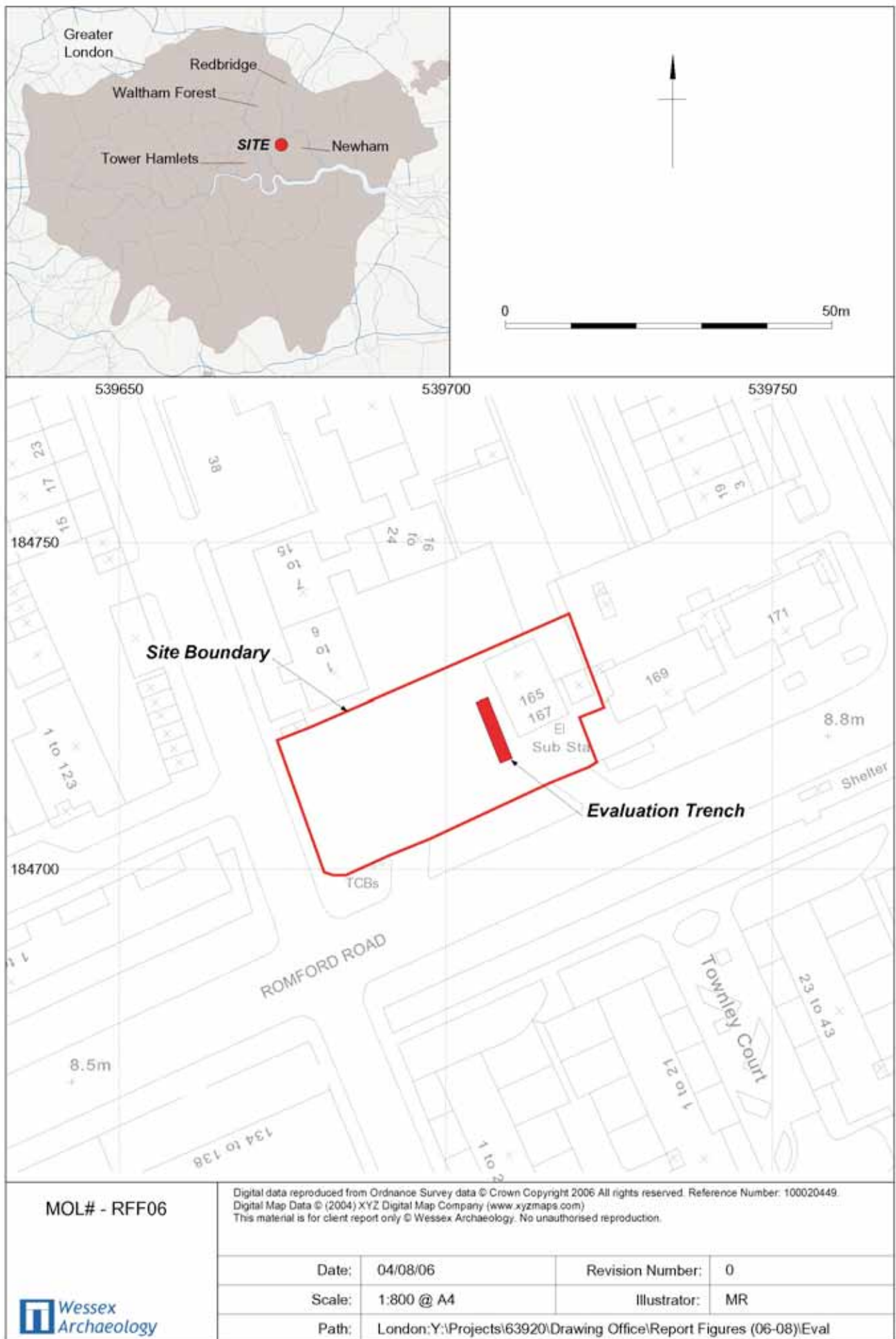
Entered by	C Butterworth (c.butterworth@wessexarch.co.uk)
Entered on	30 August 2006

OASIS:

Please e-mail [English Heritage](#) for OASIS help and advice

© ADS 1996-2006 Created by [Jo Gilham](#), email Last modified Friday 3 February 2006

Cite only: <http://ads.ahds.ac.uk/oasis/print.cfm> for this page



Site Location and Trench Location Map

Figure 1



THE TRUST FOR WESSEX ARCHAEOLOGY LTD.

Head Office: Portway House, Old Sarum Park, Salisbury, Wiltshire SP4 6EB.

Tel: 01722 326867 Fax: 01722 337562 info@wessexarch.co.uk www.wessexarch.co.uk

London Office: Unit 113, The Chandlery, 50 Westminster Bridge Road, London SE1 7QY.

Tel: 020 7953 7494 Fax: 020 7953 7499 london-info@wessexarch.co.uk www.wessexarch.co.uk

